

GENERAL PURPOSE VALVES



Series 15 >> Model 151

2-Way Normally Open Valve

The little black box – magnetic components encased in epoxy for durability and reliability. Interior parts are stainless steel and anodized aluminum. The valves may be used with air, inert gas and liquid media at pressures from vacuum to 400 psi – depending upon orifice size and configuration. For those who require extra heat resistance and media compatibility, FKM and other elastomers are available.

- Small, lightweight and economical.
- Operating pressures from vacuum to 400 psi.
- Quality design and construction.

OPERATING CONDITIONS

Media: Air, water, and other fluids compatible with standard Buna seals. Hot water, steam, gasoline, and many oils require special seal materials. (Series 15 pressure ratings may change due to the viscosity of the liquid.)*

Valve Temperature Range: Standard Valves - 0°F (-18°C) to 104°F (40°C) ambient; 0°F (-18°C) to 150°F (65°C) media. Optional Valves - can tolerate much higher or much lower ambient and media temperatures.*

Maximum Operating Pressure Differentials: See table on preceding page.

Burst Pressure: 5,000 PSI

Leakage: Bubble tight for standard valves.

Vacuum: To 5 Microns*

ELECTRICAL CHARACTERISTICS

Coil Voltage: 4.8 to 277V AC 60 HZ. and 4.4 to 255V AC 50 HZ. – 3.0 to 180V DC

Nominal Power: AC – 8.5 Watts, DC – 10.5 Watts

Coil Construction: Molded Class F. (155 C°)

Typical Response Time on Air: 4 - 16 Milliseconds

Operating Speed: Up to 600 CPM

Duty Cycle: Continuous

MECHANICAL CHARACTERISTICS

Body: Anodized Aluminum (Std.)

Internal Components: Stainless Steel

Elastomers: Nitrile (Buna) (Std.). Many other elastomers available.*

Orifice Diameter: See table on preceding page.

Porting: 1/8" NPT (Std.)

Housing: Leadwires, 1/2" NPT Conduit and DIN Style Connector

Listings: Most valves are UL and CSA listed.*

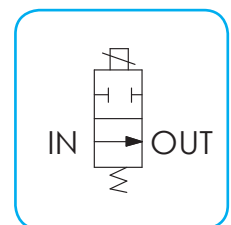
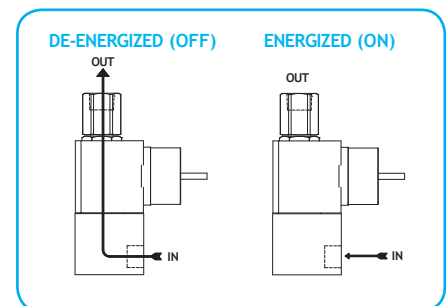
Life Expectancy: Millions of cycles, depending on application, lubrication, etc.

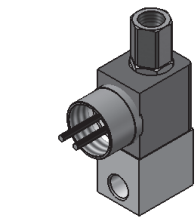
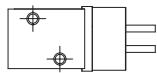
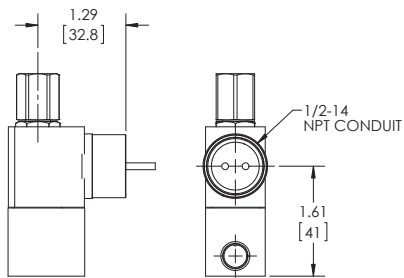
Valve Weight: 0.27 lb to 0.30 lb depending on model and housing style.

Repair Packs: See table on preceding page.

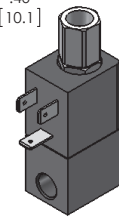
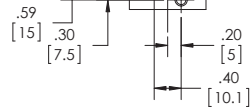
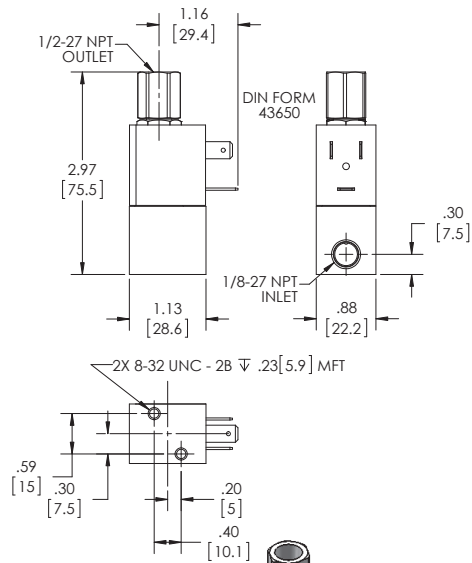
Options: Round Brass or Stainless Steel Body, Stackable Construction, Alternate Elastomers and Magnetic Latching Coil.*

* Consult representative or factory for options and specifications.

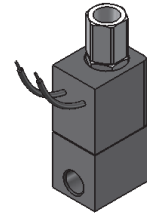
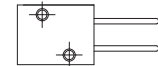
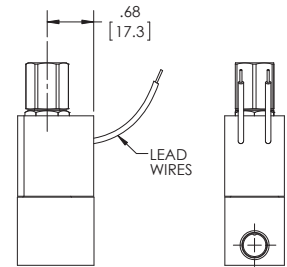




**SERIES 15
MODEL 151
2-WAY NORMALLY OPEN
CONDUIT COIL CONNECTION**



**SERIES 15
MODEL 151
2-WAY NORMALLY OPEN
CONDUIT COIL CONNECTION**



**SERIES 15
MODEL 151
2-WAY NORMALLY OPEN
CONDUIT COIL CONNECTION**

VALVE SPECIFICATIONS

MAX. OPER. PRESS. DIFF.		ORIFICE SIZE N.O.	CV FACTOR N.O.	LEAD WIRE	VALVE NUMBER	
AC	DC				DIN STYLE	CONDUIT HOUSING
400	400	1/32	.020	151G2XGM	151G2XEM	151G2XCM
200	200	3/64	.048	151H2XGM	151H2XEM	151H2XCM
125	125	1/16	.075	151J2XGM	151J2XEM	151J2XCM
40	40	3/32	.130	151K2XGM	151K2XEM	151K2XCM

WHEN ORDERING VALVES OR REPAIR PACKS ADD VOLTAGE AND FREQUENCY TO COMPLETE VALVE NUMBER. EXAMPLES: VALVE (151J2XGM-120/60) REPAIR PACK (K151JX-AC).