

HAZARDOUS LOCATION HIGH PRESSURE VALVES



Series 20 >> Model EH21

Hazardous Location High Pressure – 2-Way Normally Open

This valve uses the same kinetic energy impact mechanism as the EH22 but incorporates an internal rocker arm to reverse the action of the sealing pin. The kinetic energy of the plunger is applied to one end of the rocker arm when the coil is de-energized. This lifts the sealing pin, on the opposite end of the rocker arm, against the force of high pressure. A return spring acts directly on the pin, sealing the orifice when the coil is energized.

- Precision stainless steel rocker arm.
- Kel-F pin sealing element.
- Orifice guides the sealing pin for near perfect alignment.

OPERATING CONDITIONS

Media: Air and other non-corrosive gasses, water and oil.

Filtration: Down to 60 microns or less is recommended.

Valve Temperature Range: Standard Valves - 0°F (-18°C) to 104°F (40°C) ambient; 0°F (-18°C) to 150°F (65°C) media. Optional Valves - can tolerate much higher or much lower ambient and media temperatures.*

Maximum Operating Pressure Differentials: See table on proceeding page.

Burst Pressure: 10,000 PSI

Leakage: Bubble tight for standard valves.

ELECTRICAL CHARACTERISTICS

Coil Voltage: 6 to 825V AC 60 HZ. and 5 to 720V AC 50 HZ. – 1.8 to 265V DC

Nominal Power: AC – 7.3 Watts DC – 9.5 Watts

Coil Construction: Molded Class F with third wire ground (Std.), Class H or Potted (Opt.)

Typical Response Time on Air: 4 - 16 Milliseconds

Operating Speed: Up to 600 CPM with gas media

Duty Cycle: Continuous

MECHANICAL CHARACTERISTICS

Body: 300 Series Stainless Steel

Internal Components: Stainless Steel

Elastomers: Nitrile (Buna) (Std.). Many other elastomers available.*

Sealing Pin: Kel-F (Std.), Delrin®, Teflon®, Nylon, PEEK, Radel®, Ultem®, 303 Stainless Steel (Opt.)

Orifice Diameter: See table on proceeding page.

Porting: 1/8" NPT

Housing: Flame-Proof construction with 1/2" NPT conduit

Mounting: Must be mounted within 30° of vertical.

Listings: Valves are UL listed and certified for Hazard Locations – Class I, Div 1, Group C and D - Class II, Div 1, Group E, F, and G; Div 2, Groups C, D, E, F, and G.

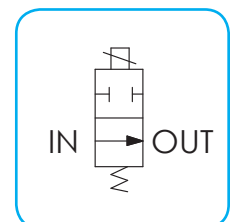
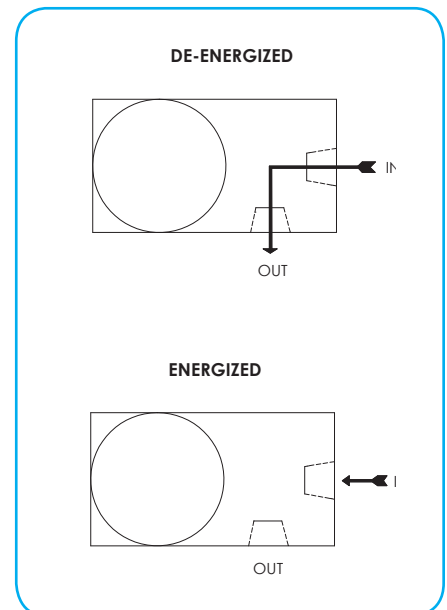
Life Expectancy: Millions of cycles, depending on application, lubrication, etc.

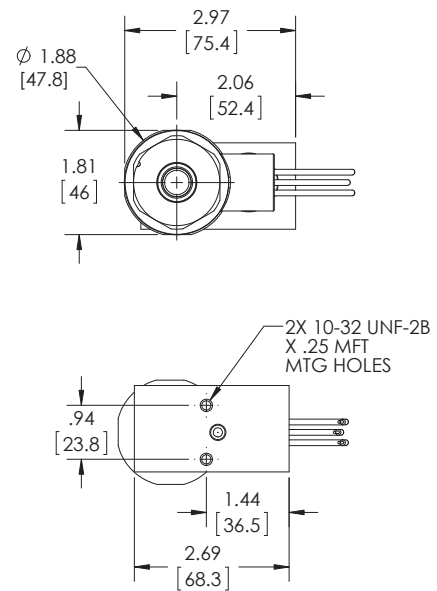
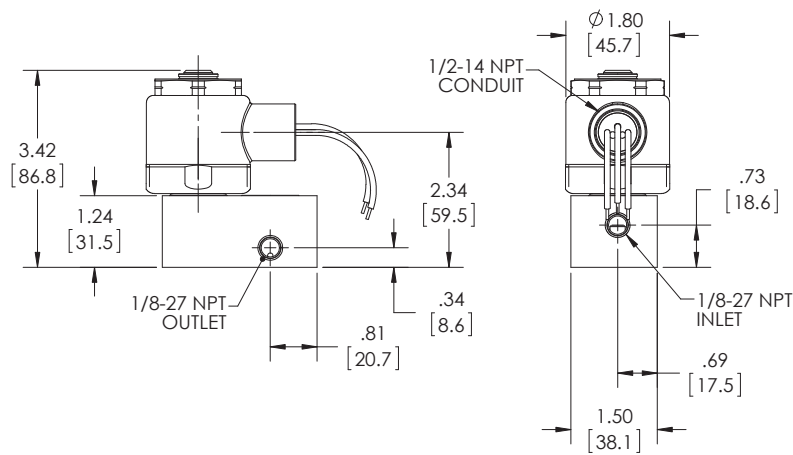
Valve Weight: 2.38 lbs

Repair Kits: See table on proceeding page.

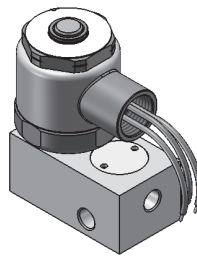
Options: Alternate Sealing Pin Materials and Alternate Elastomers*

* Consult representative or factory for options and specifications.





**SERIES 20 MODEL H21
2WNO
EXPLOSION PROOF/HIGH PRESSURE**



VALVE SPECIFICATIONS

MAX. OPER. PRESS. DIFF.		ORIFICE SIZE		CV FACTOR	VALVE NUMBER	
GAS	LIQUID	N.O.	N.O.	N.O.	GAS 1/8 NPT PORTS	LIQUID 1/8 NPTPORTS
3000	3000	1/32	.024		EH21G7DCCM	EH21G7DCCM
2500	1500	3/64	.052		EH21H7DCCMG	EH21H7DCCML
1350	850	1/16	.095		EH21J7DCCMG	EH21J7DCCML
450	300	3/32	.156		EH21K7DCCMG	EH21K7DCCML

WHEN ORDERING VALVES OR REPAIR KITS ADD VOLTAGE AND FREQUENCY TO COMPLETE VALVE NUMBER. EXAMPLES: VALVE (EH21J7DCCMG 120/60) REPAIR KIT (2KEH21J-AC)