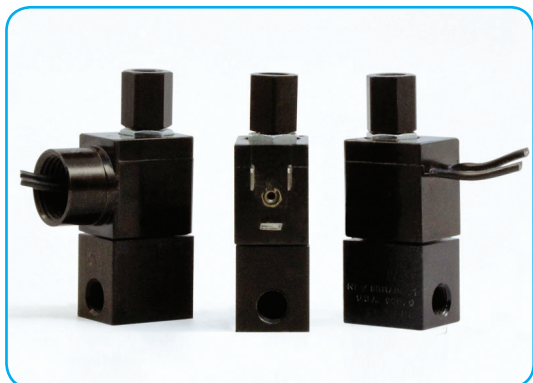


# GENERAL PURPOSE VALVES



**Note:** This valve also available as an operator. Refer to following page.

## Series 15 >> Model 153

### 3-Way Normally Closed Valve – Piped Exhaust

The little black box – magnetic components encased in epoxy for durability and reliability. Interior parts are stainless steel and anodized aluminum. The valves may be used with air, inert gas and liquid media at pressures from vacuum to 200 psi – depending upon orifice size and configuration. For those who require extra heat resistance and media compatibility, FKM and other elastomers are available.

- **Small, lightweight and economical.**
- **Operating pressures from vacuum to 200 psi.**
- **Quality design and construction.**

## OPERATING CONDITIONS

**Media:** Air, water, and other fluids compatible with standard Buna seals. Hot water, steam, gasoline, and many oils require special seal materials. (Series 15 pressure ratings may change due to the viscosity of the liquid.)\*

**Valve Temperature Range:** Standard Valves - 0°F (-18°C) to 104°F (40°C) ambient; 0°F (-18°C) to 150°F (65°C) media. Optional Valves - can tolerate much higher or much lower ambient and media temperatures.\*

**Maximum Operating Pressure Differentials:** See table on proceeding page.

**Burst Pressure:** 5,000 PSI

**Leakage:** Bubble tight for standard valves.

**Vacuum:** To 5 Microns\*

## ELECTRICAL CHARACTERISTICS

**Coil Voltage:** 4.8 to 277V AC 60 HZ. and 4.4 to 255V AC 50 HZ. – 3.0 to 180V DC

**Nominal Power:** AC – 8.5 Watts, DC – 10.5 Watts

**Coil Construction:** Molded Class F. (155°C)

**Typical Response Time on Air:** 4 - 16 Milliseconds

**Operating Speed:** Up to 600 CPM

**Duty Cycle:** Continuous

## MECHANICAL CHARACTERISTICS

**Body:** Anodized Aluminum (Std.)

**Internal Components:** Stainless Steel

**Elastomers:** Nitrile (Buna) (Std.). Many other elastomers available.\*

**Orifice Diameter:** See table on proceeding page.

**Porting:** 1/8" NPT (Std.)

**Housing:** Lead wires, 1/2" NPT Conduit and DIN Style Connector.

**Listings:** Most valves are UL and CSA listed.\*

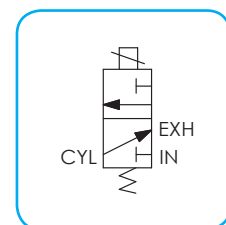
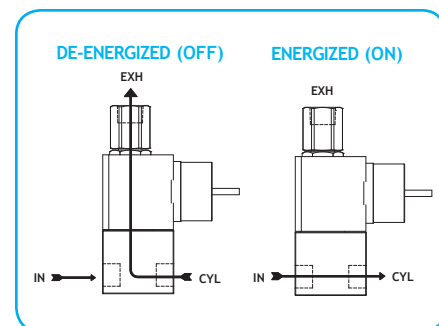
**Life Expectancy:** Millions of cycles, depending on application, lubrication, etc.

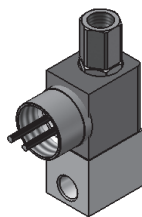
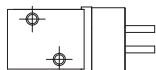
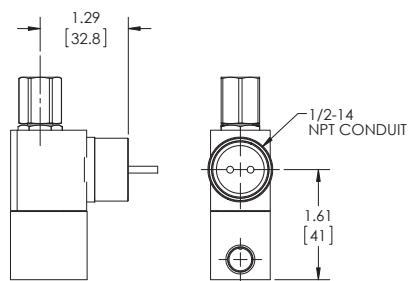
**Valve Weight:** 0.27 lb to 0.30 lb depending on model and housing style.

**Repair Packs:** See table on proceeding page.

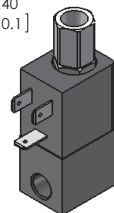
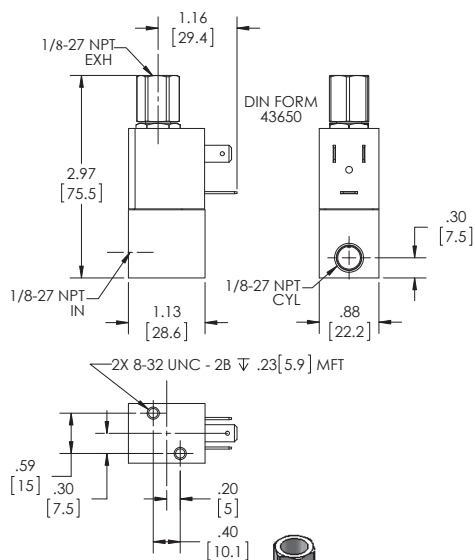
**Options:** Round Brass or Stainless Steel Body, Stackable Construction, Alternate Elastomers and Magnetic Latching Coil. Female DIN Style Connector Part Number 50-17029 \*

\* Consult representative or factory for options and specifications.

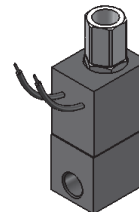
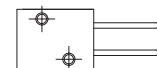
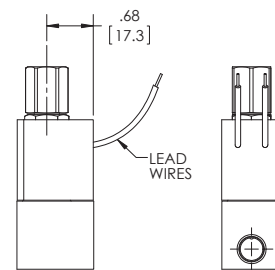




**SERIES 15  
MODEL 153  
3WNC PIPED EXHAUST  
CONDUIT CONNECTION**



**SERIES 15  
MODEL 153  
3WNC PIPED EXHAUST  
DIN STYLE**



**SERIES 15  
MODEL 153  
3WNC PIPED EXHAUST  
MOLDED WITH LEADS**

## VALVE SPECIFICATIONS

MAX. OPER. PRESS. DIFF.		ORIFICE SIZE		CV FACTOR		LEAD WIRE	VALVE NUMBER	
AC	DC	N.C.	N.O.	N.C.	N.O.		DIN STYLE	CONDUIT HOUSING
200	200	1/32	1/32	.022	.020	153GG2XGM	153GG2XEM	153GG2XCM
150	150	3/64	3/64	.055	.048	153HH2XGM	153HH2XEM	153HH2XCM
150	150	3/64	1/16	.055	.075	153HJ2XGM	153HJ2XEM	153HJ2XCM
100	100	1/16	1/16	.075	.075	153JJ2XGM	153JJ2XEM	153JJ2XCM
60	60	3/32	1/16	.130	.075	153KJ2XGM	153KJ2XEM	153KJ2XCM
50	50	3/32	3/32	.130	.130	153KK2XGM	153KK2XEM	153KK2XCM

### ORDERING INFORMATION:

WHEN ORDERING VALVES OR REPAIR PACKS ADD VOLTAGE AND FREQUENCY TO COMPLETE VALVE NUMBER. EXAMPLES: VALVE (153JJ2XGM 120/60) REPAIR PACK (K153JX AC)

WHEN ORDERING OPERATORS ADD THE LETTER "O" TO THE FRONT OF THE VALVE NUMBER, REPLACE BODY PORT NUMBER WITH THE LETTER "D": EXAMPLE: OPERATOR (O153JJDXGM 120/60)