

GENERAL PURPOSE VALVES



Note: This valve also available as an operator. Refer to following page.

Series 20 >> Model 24

3-Way Normally Open Valve

A complete line of valves with a great selection of options and exceptional proven performance. The standard in the field. Air, water, and other fluids compatible with standard Buna seals. Hot water, steam, gasoline, and many oils require special seal materials.

- The flagship valve initially created for fluid power industry.
- Heavy duty and made of stainless steel.
- A real workhorse with proven performance.
- It has the greatest amount of options available of all the valves.
- Wide range of orifice sizes from 1/32" to 1/8".

OPERATING CONDITIONS

Media: Air, water, and other fluids compatible with standard Buna seals. Hot water, steam, gasoline, and many oils require special seal materials. (Series 20 pressure ratings may change due to the viscosity of the liquid.)*

Valve Temperature Range: Standard Valves - 0°F (-18°C) to 104°F (40°C) ambient; 0°F (-18°C) to 150°F (65°C) media. Optional Valves - can tolerate much higher or much lower ambient and media temperatures.

Maximum Operating Pressure Differentials: See table on proceeding page.

Burst Pressure: 5000 PSI

Leakage: Bubble tight for standard valves.

Vacuum: To 5 Microns*

ELECTRICAL CHARACTERISTICS

Coil Voltage: 6 to 825V AC 60 HZ. and 5 to 720V AC 50 HZ. — 1.8 to 265V DC

Nominal Power: AC — 8.7 Watts DC — 9.5 Watts

Coil Construction: Molded (Std.), Non-molded Class A and potted Class F (Class H optional)

Typical Response Time on Air: 4 - 16 Milliseconds

Operating Speed: Up to 600 CPM

Duty Cycle: Continuous

MECHANICAL CHARACTERISTICS

Body: Stainless Steel (Std.) or Brass (Opt.)

Internal Components: Stainless Steel

Elastomers: Nitrile (Buna) (Std.). Many other elastomers available.*

Orifice Diameter: See table on proceeding page.

Porting: Standard 1/8" and 1/4" NPT (other ports available).*

Housing: Grommet and 1/2" NPT conduit - many options available.*

Listings: Most valves are UL and CSA listed.*

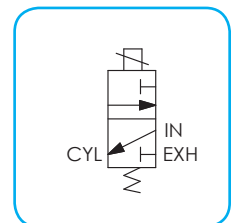
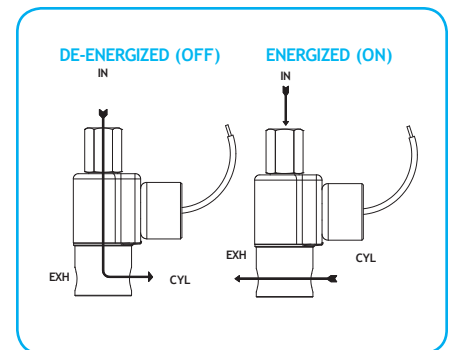
Life Expectancy: Millions of cycles, depending on application, lubrication, etc.

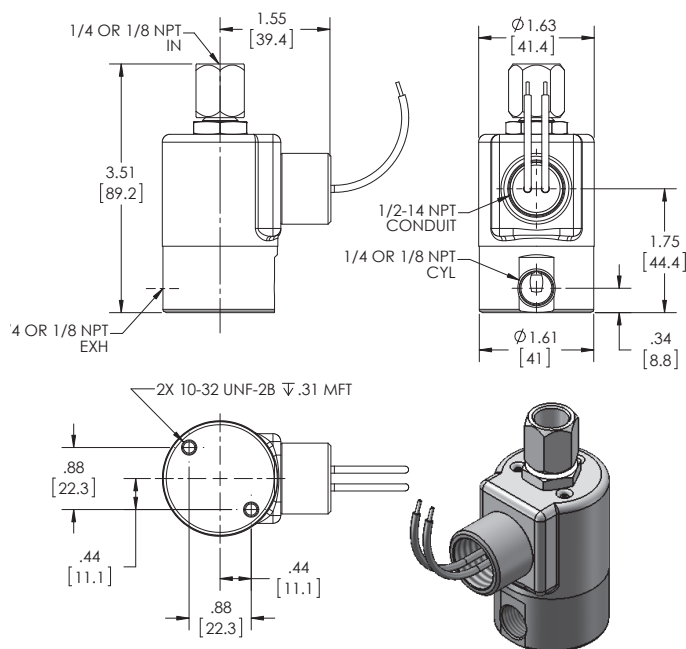
Valve Weight: Grommet Valve: 1.13 lb Conduit Valve: 1.19 lb

Repair Packs: See table on proceeding page.

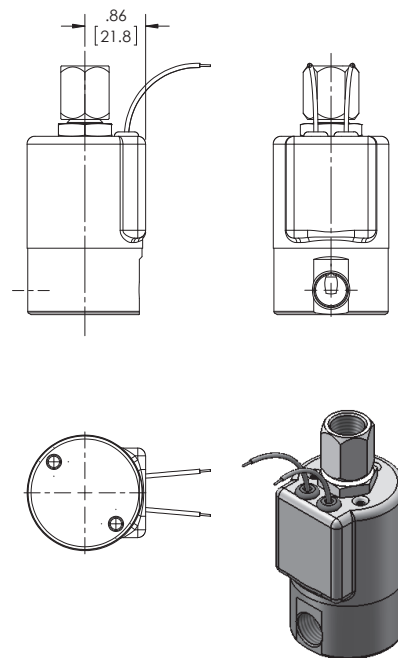
Options: Alternate Port Locations, Metering, Manual Override, Alternate Elastomers, Spade Terminal Coil, European Style DIN, Explosion Proof and Magnetic Latching Coil

* Consult representative or factory for options and specifications.





**SERIES 20
MODEL 24
3WNO
CONDUIT CONNECTION**



**SERIES 20
MODEL 24
3WNO
GROMMET HOUSING WITH LEADS**

VALVE SPECIFICATIONS

MAX. OPER. PRESS. DIFF. +		ORIFICE SIZE		CV FACTOR		VALVE NUMBER		CONDUIT HOUSING	
AC	DC	N.O.	N.C.	N.O.	N.C.	GROMMET HOUSING		1/8 NPT PORTS	1/4 NPT PORTS
400	400	1/32	1/32	.024	.024	24GG7XGM	24GG9ZGM	24GG7XCM	24GG9ZCM
150 (225)	150	3/64	1/16	.052	.095	24HJ7XGM	24HJ9ZGM	24HJ7XCM	24HJ9ZCM
100 (150)	100	1/16	1/16	.095	.095	24JJ7XGM	24JJ9ZGM	24JJ7XCM	24JJ9ZCM
100 (150)	100	1/16	3/32	.095	.156	24JK7XGM	24JK9ZGM	24JK7XCM	24JK9ZCM
100 (125)	100	1/16	1/8	.095	.284	24JN7XGM	24JN9ZGM	24JN7XCM	24JN9ZCM
75 (90)	75	3/32	1/8	.156	.284	24KN7XGM	24KN9ZGM	24KN7XCM	24KN9ZCM
30	30	1/8	1/8	.201	.284	24NN7XGM	24NN9ZGM	24NN7XCM	24NN9ZCM

^ VALVES WITH 1/8 N.O. ORIFICE ARE UL LISTED ONLY

+ Ratings in brackets are optional extended ratings; consult factory.

ORDERING INFORMATION:

WHEN ORDERING VALVES OR REPAIR PACKS ADD VOLTAGE AND FREQUENCY TO COMPLETE VALVE NUMBER. EXAMPLES: VALVE (24JK9ZGM 120/60) REPAIR PACK (K24JKX AC)

WHEN ORDERING OPERATORS ADD THE LETTER "O" TO THE FRONT OF THE VALVE NUMBER, REPLACE BODY PORT NUMBER WITH THE LETTER "D": EXAMPLE: OPERATOR (O24JK9DGM 120/60)