

GENERAL PURPOSE VALVES



Note: This valve also available as an operator. Refer to following page.

Series 15 >> Model 155

3-Way Directional Control

The little black box – magnetic components encased in epoxy for durability and reliability. Interior parts are stainless steel and anodized aluminum. The valves may be used with air, inert gas and liquid media at pressures from vacuum to 300 psi AC, 200 psi DC – depending upon orifice size and configuration. For those who require extra heat resistance and media compatibility, FKM and other elastomers are available.

- **Small, lightweight and economical.**
- **Operating pressures from vacuum to 300 psi AC, 200 psi DC.**
- **Quality design and construction.**

OPERATING CONDITIONS

Media: Air, water, and other fluids are compatible with standard Buna seals. Hot water, steam, gasoline, and many oils require other seal materials. (Series 15 pressure ratings may change due to the viscosity of the liquid.)*

Valve Temperature Range: Standard Valves - 0°F (-18°C) to 104°F (40°C) ambient; 0°F (-18°C) to 150°F (65°C) media. Optional Valves - can tolerate much higher or much lower ambient and media temperatures.*

Maximum Operating Pressure Differentials: See table on next page.

Burst Pressure: 5,000 PSI

Leakage: Bubble tight for standard valves.

Vacuum: To 5 Microns*

ELECTRICAL CHARACTERISTICS

Coil Voltage: 4.8 to 277/60, 4.4 to 255/50 and 3.0 to 180/DC

Nominal Power: AC – 8.5 Watts, DC – 10.5 Watts

Coil Construction: Molded Class F. (155°C)

Typical Response Time on Air: 4 - 16 Milliseconds

Operating Speed: Up to 600 CPM

Duty Cycle: Continuous

MECHANICAL CHARACTERISTICS

Body: Anodized Aluminum (Std.)

Internal Components: Stainless Steel. Copper - AC Only.

Elastomers: Nitrile (Buna) (Std.). Many other elastomers available.*

Orifice Diameter: See table on next page.

Porting: 1/8" NPT (Std.)

Housing: Lead wires, 1/2" NPT Conduit and DIN Style Connector.

Listings: Most valves are UL and CSA listed.*

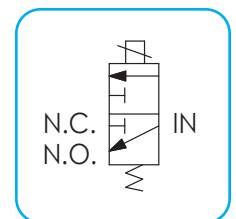
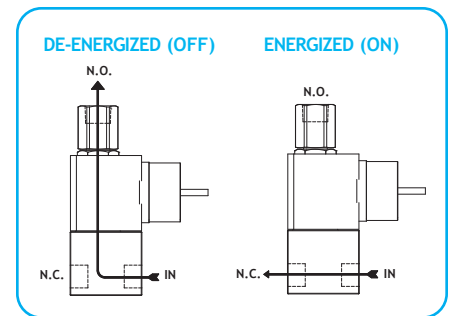
Life Expectancy: Millions of cycles, depending on application, lubrication, etc.

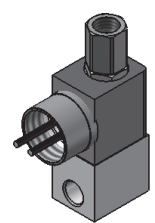
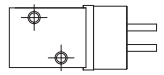
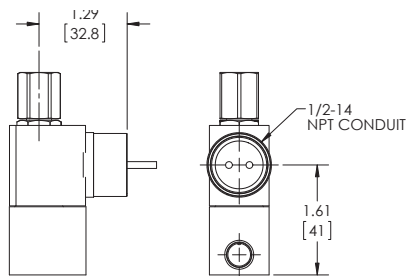
Valve Weight: 0.27 lb to 0.30 lb depending on model and housing style.

Repair Packs: See table on next page.

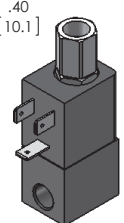
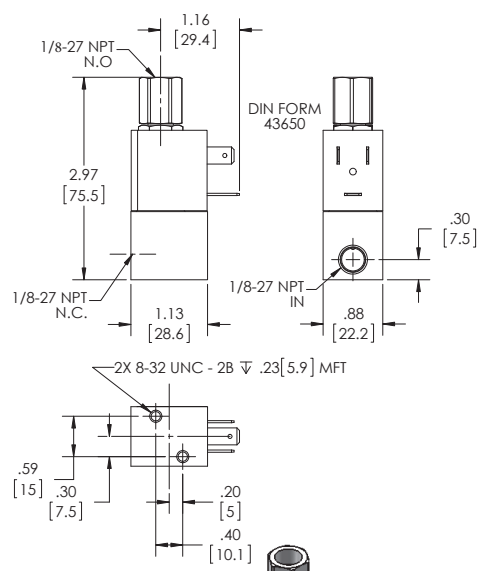
Options: Round Brass or Stainless Steel Body, Stackable Construction, Alternate Elastomers and Magnetic Latching Coil. Female DIN Style Connector Part Number 50-17029 *

* Consult representative or factory for options and specifications.

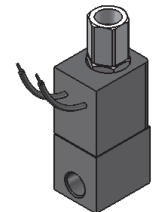
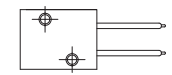
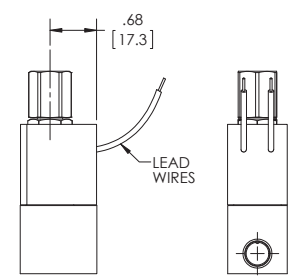




**SERIES 15
MODEL 155
3-WAY DIRECTIONAL CONTROL
CONDUIT CONNECTION**



**SERIES 15
MODEL 155
3-WAY DIRECTIONAL CONTROL
DIN STYLE**



**SERIES 15
MODEL 155
3-WAY DIRECTIONAL CONTROL
MOLDED WITH LEADS**

VALVE SPECIFICATIONS

MAX. OPER. PRESS. DIFF.		ORIFICE SIZE		CV FACTOR		LEAD WIRE	VALVE NUMBER	
AC	DC	N.C.	N.O.	N.C.	N.O.		DIN STYLE	CONDUIT HOUSING
300	200	1/32	1/32	.022	.020	155GG2XGM	155GG2XEM	155GG2XCM
200	150	3/64	3/64	.055	.048	155HH2XGM	155HH2XEM	155HH2XCM
100	75	1/16	1/16	.075	.075	155JJ2XGM	155JJ2XEM	155JJ2XCM
75	40	3/32	1/16	.130	.075	155KJ2XGM	155KJ2XEM	155KJ2XCM
75	40	3/32	3/32	.130	.130	155KK2XGM	155KK2XEM	155KK2XCM

ORDERING INFORMATION:

WHEN ORDERING VALVES OR REPAIR PACKS ADD VOLTAGE AND FREQUENCY TO COMPLETE VALVE NUMBER. EXAMPLES: VALVE (155HH2XGM 120/60) REPAIR PACK (K155HX AC)

WHEN ORDERING OPERATORS ADD THE LETTER "O" TO THE FRONT OF THE VALVE NUMBER, REPLACE BODY PORT NUMBER WITH THE LETTER "D": EXAMPLE: OPERATOR (O155HH2DGM 120/60)